

Devine-TL5.5/6.0 Posterior Spinal System

Brochure



TRAUSON®

Trauson(China) Medical Instrument Co., Ltd

Add:No.9 Long Men Road, Wujin Hi-Tech Industrail Zone, 213164, Changzhou City, Jiangsu Province. P.R.C.
Tel:86-519-86387075 Fax:86-519-86387279 Email:info@trauson.com http://www.trauson.com

Devine-TL5.5/6.0 Posterior Spinal System

Indications

- Disc degenerative disease
- Spondylolisthesis
- Stenosis
- Spinal Fracture
- Spinal Tumor

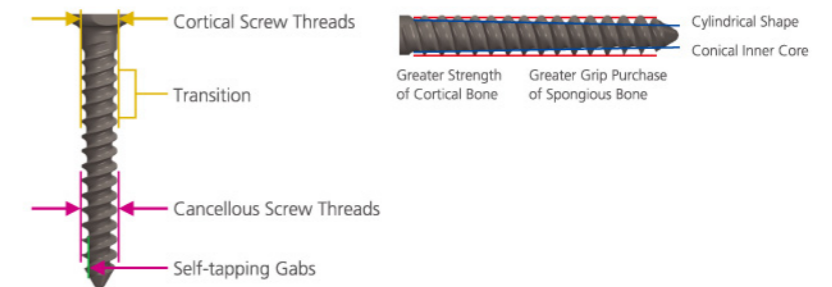
Features & Benefits

- Elrod rod provides motion increase compared to rigid rod
- Load sharing delay or reduce adjacent level degeneration
- Wider range of diameter allow for an increased indications
- Reverse thread in set screw

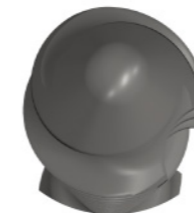
- Low profile screw head



- Cylindrical shape and conical inner core design



- Dual thread lines design of screw



Dual Thread Lines, Screw Tip Axial View

Devine-TL5.5/6.0 Posterior Spinal System

Implants (Continued)

Multi-axial Screw

P/N-TL5.5	P/N-TL6.0	Dia	Length	Material
45377035E	45430035E	Ø6.5mm	35mm	TA
45377040E	45430040E	Ø6.5mm	40mm	TA
45377045E	45430045E	Ø6.5mm	45mm	TA
45377050E	45430050E	Ø6.5mm	50mm	TA
45377055E	45430055E	Ø6.5mm	55mm	TA
45377060E	45430060E	Ø6.5mm	60mm	TA
45377065E	45430065E	Ø6.5mm	65mm	TA
45378025E	45431025E	Ø7.0mm	25mm	TA
45378030E	45431030E	Ø7.0mm	30mm	TA
45378035E	45431035E	Ø7.0mm	35mm	TA
45378040E	45431040E	Ø7.0mm	40mm	TA
45378045E	45431045E	Ø7.0mm	45mm	TA
45378050E	45431050E	Ø7.0mm	50mm	TA
45378055E	45431055E	Ø7.0mm	55mm	TA
45378060E	45431060E	Ø7.0mm	60mm	TA
45378065E	45431065E	Ø7.0mm	65mm	TA
45378070E	45431070E	Ø7.0mm	70mm	TA
45379025E	45432025E	Ø7.5mm	25mm	TA
45379030E	45432030E	Ø7.5mm	30mm	TA
45379035E	45432035E	Ø7.5mm	35mm	TA
45379040E	45432040E	Ø7.5mm	40mm	TA
45379045E	45432045E	Ø7.5mm	45mm	TA
45379050E	45432050E	Ø7.5mm	50mm	TA
45379055E	45432055E	Ø7.5mm	55mm	TA
45379060E	45432060E	Ø7.5mm	60mm	TA
45379065E	45432065E	Ø7.5mm	65mm	TA
45379070E	45432070E	Ø7.5mm	70mm	TA

Reduction Multi-axial Screw

P/N-TL5.5	P/N-TL6.0	Dia	Length	Material
45380020E	45433020E	Ø4.0mm	20mm	TA
45380025E	45433025E	Ø4.0mm	25mm	TA
45380030E	45433030E	Ø4.0mm	30mm	TA
45380035E	45433035E	Ø4.0mm	35mm	TA
45380040E	45433040E	Ø4.0mm	40mm	TA
45380045E	45433045E	Ø4.0mm	45mm	TA
45380050E	45433050E	Ø4.0mm	50mm	TA

Reduction Multi-axial Screw

P/N-TL5.5	P/N-TL6.0	Dia	Length	Material
45381020E	45434020E	Ø4.5mm	20mm	TA
45381025E	45434025E	Ø4.5mm	25mm	TA
45381030E	45434030E	Ø4.5mm	30mm	TA
45381035E	45434035E	Ø4.5mm	35mm	TA
45381040E	45434040E	Ø4.5mm	40mm	TA
45381045E	45434045E	Ø4.5mm	45mm	TA
45381050E	45434050E	Ø4.5mm	50mm	TA
45382020E	45435020E	Ø5.0mm	20mm	TA
45382025E	45435025E	Ø5.0mm	25mm	TA
45382030E	45435030E	Ø5.0mm	30mm	TA
45382035E	45435035E	Ø5.0mm	35mm	TA
45382040E	45435040E	Ø5.0mm	40mm	TA
45382045E	45435045E	Ø5.0mm	45mm	TA
45382050E	45435050E	Ø5.0mm	50mm	TA
45383020E	45436020E	Ø5.5mm	20mm	TA
45383025E	45436025E	Ø5.5mm	25mm	TA
45383030E	45436030E	Ø5.5mm	30mm	TA
45383035E	45436035E	Ø5.5mm	35mm	TA
45383040E	45436040E	Ø5.5mm	40mm	TA
45383045E	45436045E	Ø5.5mm	45mm	TA
45383050E	45436050E	Ø5.5mm	50mm	TA
45383055E	45436055E	Ø5.5mm	55mm	TA
45383060E	45436060E	Ø5.5mm	60mm	TA
45384020E	45437020E	Ø6.0mm	20mm	TA
45384025E	45437025E	Ø6.0mm	25mm	TA
45384030E	45437030E	Ø6.0mm	30mm	TA
45384035E	45437035E	Ø6.0mm	35mm	TA
45384040E	45437040E	Ø6.0mm	40mm	TA
45384045E	45437045E	Ø6.0mm	45mm	TA
45384050E	45437050E	Ø6.0mm	50mm	TA
45384055E	45437055E	Ø6.0mm	55mm	TA
45384060E	45437060E	Ø6.0mm	60mm	TA
45384065E	45437065E	Ø6.0mm	65mm	TA
45385020E	45438020E	Ø6.5mm	20mm	TA
45385025E	45438025E	Ø6.5mm	25mm	TA
45385030E	45438030E	Ø6.5mm	30mm	TA
45385035E	45438035E	Ø6.5mm	35mm	TA
45385040E	45438040E	Ø6.5mm	40mm	TA
45385045E	45438045E	Ø6.5mm	45mm	TA

Reduction Multi-axial Screw

P/N-TL5.5	P/N-TL6.0	Dia	Length	Material
45385050E	45438050E	Ø6.5mm	50mm	TA
45385055E	45438055E	Ø6.5mm	55mm	TA
45385060E	45438060E	Ø6.5mm	60mm	TA
45385065E	45438065E	Ø6.5mm	65mm	TA
45386025E	45439025E	Ø7.0mm	25mm	TA
45386030E	45439030E	Ø7.0mm	30mm	TA
45386035E	45439035E	Ø7.0mm	35mm	TA
45386040E	45439040E	Ø7.0mm	40mm	TA
45386045E	45439045E	Ø7.0mm	45mm	TA
45386050E	45439050E	Ø7.0mm	50mm	TA
45386055E	45439055E	Ø7.0mm	55mm	TA
45386060E	45439060E	Ø7.0mm	60mm	TA
45386065E	45439065E	Ø7.0mm	65mm	TA
45386070E	45439070E	Ø7.0mm	70mm	TA
45387025E	45440025E	Ø7.5mm	25mm	TA
45387030E	45440030E	Ø7.5mm	30mm	TA
45387035E	45440035E	Ø7.5mm	35mm	TA
45387040E	45440040E	Ø7.5mm	40mm	TA
45387045E	45440045E	Ø7.5mm	45mm	TA
45387050E	45440050E	Ø7.5mm	50mm	TA
45387055E	45440055E	Ø7.5mm	55mm	TA
45387060E	45440060E	Ø7.5mm	60mm	TA
45387065E	45440065E	Ø7.5mm	65mm	TA
45387070E	45440070E	Ø7.5mm	70mm	TA

Pedicle Hook

P/N-TL5.5	P/N-TL6.0	Specification	Material
45388010E	45441010E	L	TA
45388020E	45441020E	M	TA
45388030E	45441030E	S	TA

Wide Blade Hook

P/N-TL5.5	P/N-TL6.0	Specification	Material
45390010E	45443010E	L	TA
45390020E	45443020E	M	TA
45390030E	45443030E	S	TA

Narrow Blade Hook

P/N-TL5.5	P/N-TL6.0	Specification	Material
45391010E	45444010E	L	TA
45391020E	45444020E	M	TA
45391030E	45444030E	S	TA

Wide Blade Ramped Hook

P/N-TL5.5	P/N-TL6.0	Specification	Material
45392020E	45445020E	M	TA

Narrow Blade Ramped Hook

P/N-TL5.5	P/N-TL6.0	Specification	Material
45393020E	45446020E	M	TA

Lumbar Supralaminar Hook

P/N-TL5.5	P/N-TL6.0	Specification	Material
/	45447010E	L	TA
45394020E	45447020E	M	TA
/	45447030E	S	TA

Lumbar Infralaminar Hook

P/N-TL5.5	P/N-TL6.0	Specification	Material
45395010E	45448010E	L	TA
/	45448020E	M	TA
45395030E	45448030E	S	TA

Extended Body Hook

P/N-TL5.5	P/N-TL6.0	Specification	Material
45396010E	45449010E	L	TA
45396020E	45449020E	M	TA
45396030E	45449030E	S	TA

Devine-TL5.5/6.0 Posterior Spinal System

Implants (Continued)

Thoracic Angled Hook

P/N-TL5.5	P/N-TL6.0	Specification	Material
45397001E	45450001E	L	TA
45397002E	45450002E	R	TA

Crosslink Device

P/N-TL5.5	P/N-TL6.0	Length	Material
45399040E	45453040E	L=40	TA
45399045E	45453045E	L=45	TA
45399050E	45453050E	L=50	TA
45399055E	45453055E	L=55	TA
45399060E	45453060E	L=60	TA
45399070E	45453070E	L=70	TA
45399080E	45453080E	L=80	TA
45399090E	45453090E	L=90	TA
45399100E	45453100E	L=100	TA

Rod

P/N-TL5.5	P/N-TL6.0	Length	Material
45398030E	45451030E	L=30	TA
45398035E	45451035E	L=35	TA
45398040E	45451040E	L=40	TA
45398045E	45451045E	L=45	TA
45398050E	45451050E	L=50	TA
45398055E	45451055E	L=55	TA
45398060E	45451060E	L=60	TA
45398070E	45451070E	L=70	TA
45398080E	45451080E	L=80	TA
45398090E	45451090E	L=90	TA
45398100E	45451100E	L=100	TA
45398110E	45451110E	L=110	TA
45398120E	45451120E	L=120	TA
45398250E	45451250E	L=250	TA
45398510E	45451510E	L=510	TA

Offset Hook

P/N-TL5.5	P/N-TL6.0	Specification	Material
45389001E	45442001E	L	TA
45389002E	45442002E	R	TA

TL5.5 Domino Connector

P/N-TL5.5	Spec	Material
45401001E	Square	TA
45401002E	Straight	TA

M5 Set Screw

P/N-TL5.5	Material
45402000E	TA

Elrod ROD

P/N-TL5.5	P/N-TL6.0	Length	Material
45403055E	45454055E	L=55	TA
45403060E	45454060E	L=60	TA
45403065E	45454065E	L=65	TA
45403070E	45454070E	L=70	TA
45403075E	45454075E	L=75	TA
45403080E	45454080E	L=80	TA
45403085E	45454085E	L=85	TA
45403090E	45454090E	L=90	TA
45403095E	45454095E	L=95	TA
45403100E	45454100E	L=100	TA
45403110E	45454110E	L=110	TA
45403120E	45454120E	L=120	TA
45403130E	45454130E	L=130	TA

Instruments

Devine-TL5.5 Spine Instrument Set

P/N	Description	Quantity
13200100E	Stright Awl	1
13200200E	Stright Awl, thoracic	1
13200300E	3.0mm Straight Probe	1
13200400E	3.0mm Curved Probe	1
13200500E	3.5mm Straight Probe	1
13200600E	3.5mm Curved Probe	1
13200700E	Straght Feeler	1
13200800E	Curved Feeler	1
10240100E	3.5mm Tap	1
10240200E	4.5mm Tap	1
10240300E	5.5mm Tap	1
10240400E	6.5mm Tap	1
10240500E	Monoaxial Screwdriver	1
10240600E	Reduction Monoaxial Screwdriver	1
10240700E	Multiaxial Screwdriver	1
10240800E	Reduction Multiaxial Screwdriver	1
13201700E	Trail Rod, Ø3	1
10240900E	Previsional Tighter	2
10241000E	Set Screw Driver	1
13202000E	Torque Limiting Driver	1
10241100E	Anti-torque Wrench	1
13202200E	Crosslink Nut Driver, SW3.0	1
13202300E	Rod Pusher	1
13202400E	Rod Rotation Wrench, SW3.5	1
13202500E	Reduction Tap Breaker	1
13202600E	Rod Holder (Small)	1
13202700E	Rod Bender	1
13202800E	Compressor	1

Devine-TL5.5 Spine Instrument Set

P/N	Description	Quantity
13202900E	Distractor	1
13203000E	Powerful Forcep	1
13203100E	Rod Gripper	1
10241200E	Rod Reduction Forcep	1
13203300E	Forcep Rocker	1
10241300E	Derotation Sleeve, Large	4
13203500E	Ratchet Handle	1
13203600E	Quick T-handle	1
13204400E	Domino Nut Driver, SW2.5	1
13203800E	Straight Feeler (thick)	1
13203900E	Marker (round)	3
13204000E	Marker (ball)	3
10241400E	Anti-torque Wrench	1
10241500E	Instrument Case	1
13204300E	Quick Handle	1
13204500E	Anti-torque Wrench	1
13204600E	Clasp Pusher	1
11904600E	Crosslink Holder	1
13204800E	Reduction Tap Cutter	1
13204900E	In-situ Bender - left	1
13205000E	In-situ Bender - right	1
13205100E	Hook Holder (straight)	1
13205200E	Hook Holder (curved)	1
11901400E	Pedicle Elevator	1
11901500E	Lamina Elevator	1
11901600E	Hook Pusher	1
11901800E	Hook Holder	1
11903000E	Rod Cutter	1

Devine-TL5.5/6.0 Posterior Spinal System

Instruments (Continued)

Devine-TL6.0 Spine Instrument Set

P/N	Description	Quantity
13200100E	Stright Awl	1
13200200E	Stright Awl, thoracic	1
13200300E	3.0mm Straight Probe	1
13200400E	3.0mm Curved Probe	1
13200500E	3.5mm Straight Probe	1
13200600E	3.5mm Curved Probe	1
13200700E	Straght Feeler	1
13200800E	Curved Feeler	1
10240100E	3.5mm Tap	1
10240200E	4.5mm Tap	1
10240300E	5.5mm Tap	1
10240400E	6.5mm Tap	1
10250100E	Monoaxial Screwdriver	1
10250200E	Reduction Monoaxial Screwdriver	1
10250300E	Multiaxial Screwdriver	1
10250400E	Reduction Multiaxial Screwdriver	1
13201700E	Trail Rod, Ø3	1
10250500E	Previsional Tighter	1
10250600E	Set Screw Driver	1
13202000E	Torque Limiting Driver	1
10250700E	Anti-torque Wrench	1
13202200E	Crosslink Nut Driver, SW3.0	1
13202300E	Rod Pusher	1
19901500E	Rod Rotation Wrench, SW3.5	1
13202500E	Reduction Tap Breaker	1
13202600E	Rod Holder (Small)	1
13202700E	Rod Bender	1
13202800E	Compressor	1

Devine-TL6.0 Spine Instrument Set

P/N	Description	Quantity
13202900E	Distractor	1
13203000E	Powerful Forcep	1
13203100E	Rod Gripper	1
10250900E	Rod Reduction Forcep	1
13203300E	Forcep Rocker	1
10251000E	Derotation Sleeve, Large	4
13203500E	Ratchet Handle	1
13203600E	Quick T-handle	1
13204400E	Domino Nut Driver, SW2.5	1
13203800E	Straight Feeler (thick)	1
13203900E	Marker (round)	3
13204000E	Marker (ball)	3
10250800E	Anti-torque Wrench	1
10251200E	Instrument Case	1
13204300E	Quick Handle	1
10251100E	Anti-torque Wrench	1
13204600E	Clasp Pusher	1
11904600E	Crosslink Holder	1
19902400E	Reduction Tap Cutter	1
11402013E	In-situ Bender - left	1
11402014E	In-situ Bender - right	1
13205100E	Hook Holder (straight)	1
13205200E	Hook Holder (curved)	1
11901400E	Pedicle Elevator	1
11901500E	Lamina Elevator	1
11901600E	Hook Pusher	1
11901800E	Hook Holder	1
11903000E	Rod Cutter	1